

الفصل الثالث

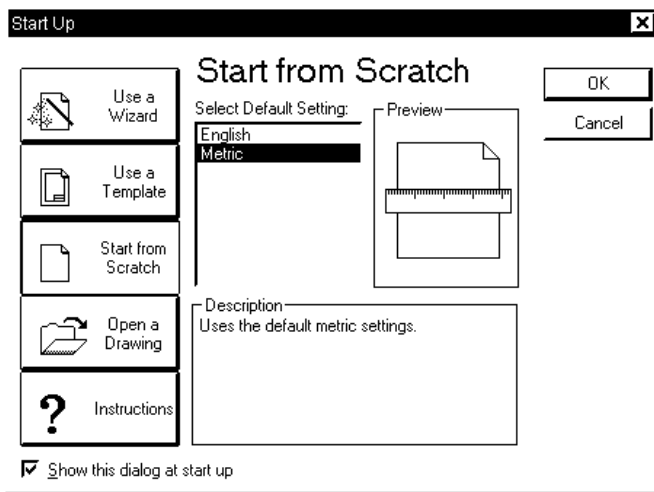
التعامل مع الملفات

File Handling

إنشاء ملف جديد للرسم :

| | | |
|----------------------|--------|-------|
| NEW | .FILE | 1 |
| | | New |
| Enter | | New |
| | Ctrl+N | 4 |
| Startup Dialogue Box | | |
| | | (1-3) |

: Start from Scratch



: Use a Wizard

: Use a Template

: Instructions

Startup

Startup Dialogue Box

(1-3)

.Use a Wizard " " Start from Scratch

:Start from Scratch البدء بالإعدادات البسيطة

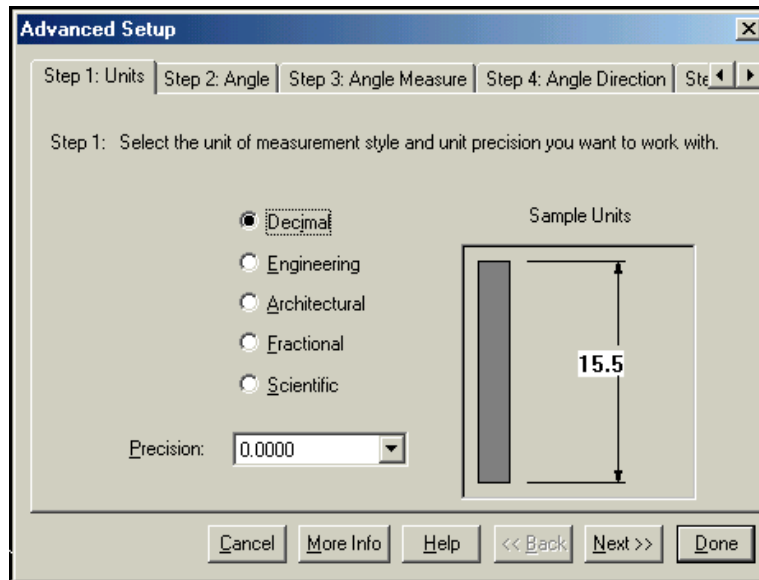
English

Metric

:Use a Wizard استخدام البسيطة

الإعدادات المتقدمة للرسم

(2-3) :



(2-3)

: _____

: _____

: _____

: _____

: _____

:

:

Paper space layout

الإعداد السريع : Quick start

(3-3)

Area

Units

فتح ملف موجود

.Open

File

.1

Open

.2

Enter

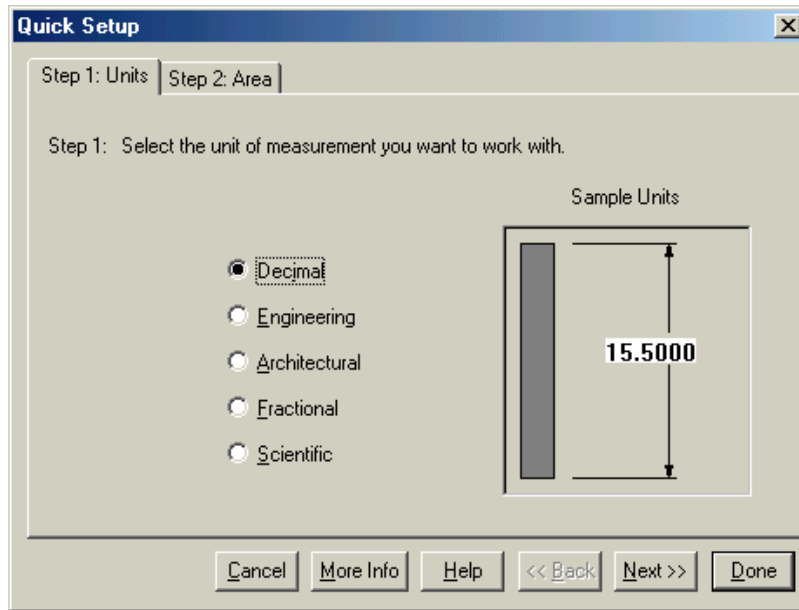
Open

.3

..

Ctrl+O

.4



(3-3)

(4-3) Select File

Preview

Select File

.

:

:File name

:Directories

.CD-ROM

:Drives

.CD-ROM

A: , B:

. D: C:

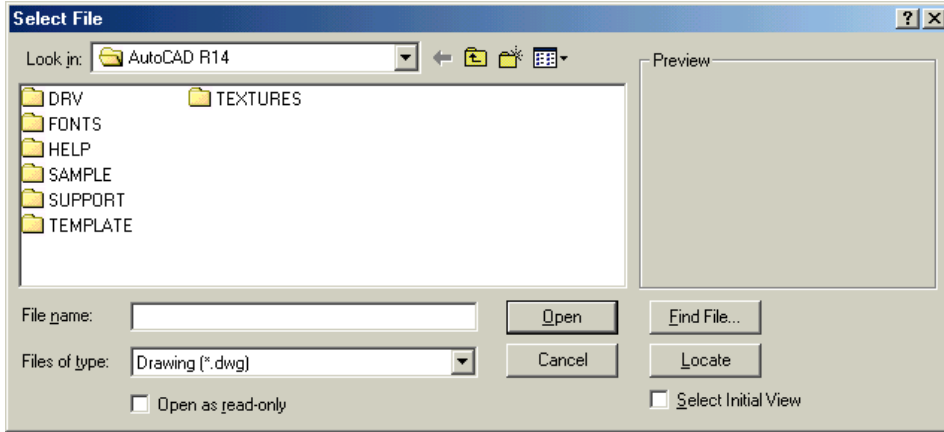
:Preview

hard desk

Floppy desk

CD-ROM

.preview



Open

(4-3)

:Read Only

استعراض والبحث عن الملفات:

Browse استعراض الرسوم

Find file

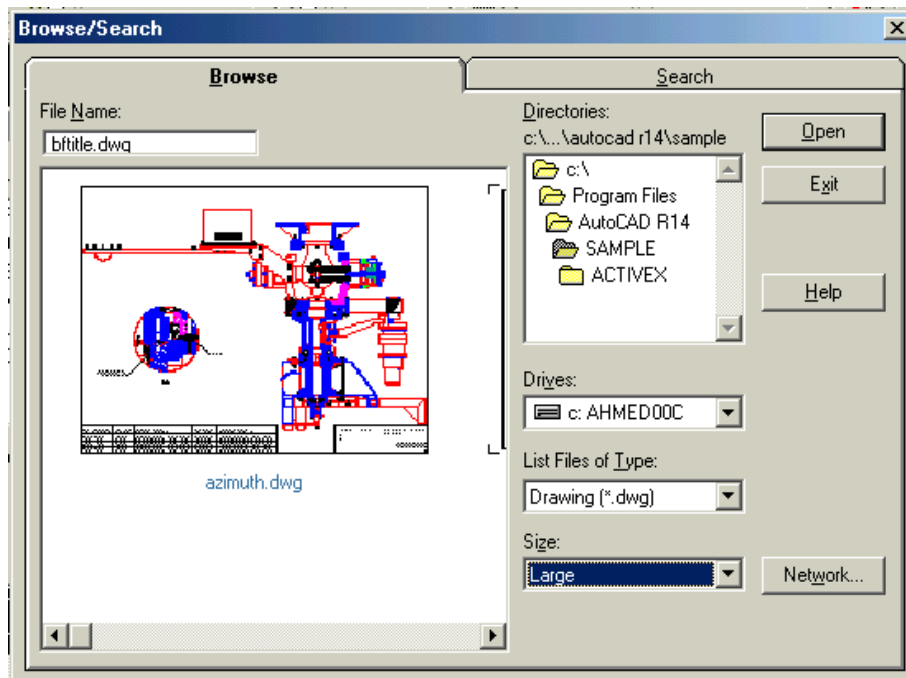
Browse /

Open

(5-3) search

.CD-ROM

Folder



Browse/Search

(5-3)

Size

Large Medium Small

Drives

Directories

.list files of types

File name

open

البحث عن الملفات Search

Browse / search

search

.Alt+S

Search Pattern

*

* Astrix

Date

.File types

.Time

Drives

All drive

Path

Edit Path

Edit

Search

تمرين 1-3:

| |
|-----------|
| Sample |
| File Name |

| | | |
|------|---|---------|
| Open | . | Preview |
| | . | |

celo bis

Save)

Save As

File

Save

File

dwg

Qsave , Save as ,save

(6-3)

Save drawing as ..

OK

Directories

File name

EX1

NEW DRAWING NAME EX1

. DWG

File extension

- { () ! @ # ^ &) \$

< : > [/ + *

:

.S

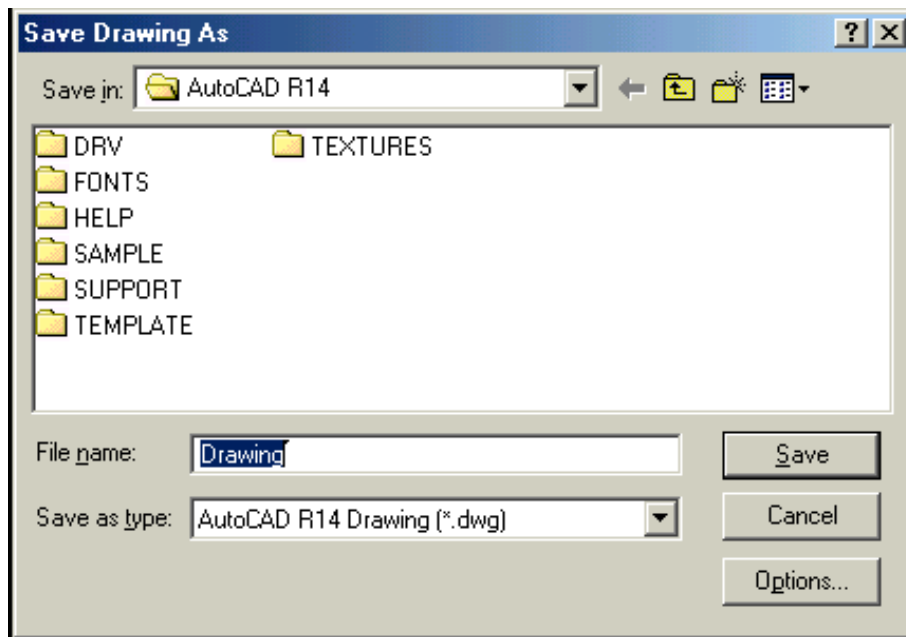
File

Alt+F

•

Save •

Save •



Save As

(6-3)

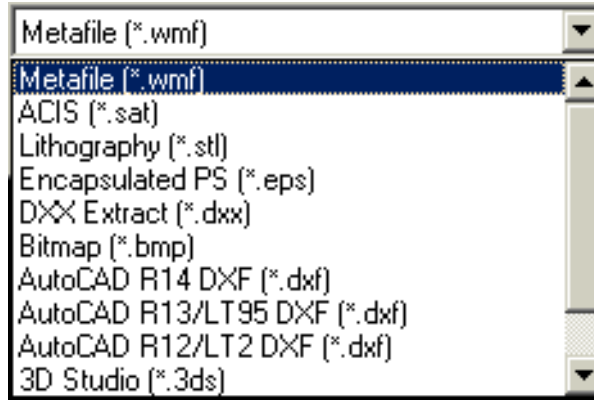
أساليب حفظ الرسومات

:

.DWG •

Database •

(7-3)



(7-3)

Backup Files

.Bak

حفظ الرسومات تلقائياً

120

AUTO. SV\$

()

preferences

.(8-3)

preferences

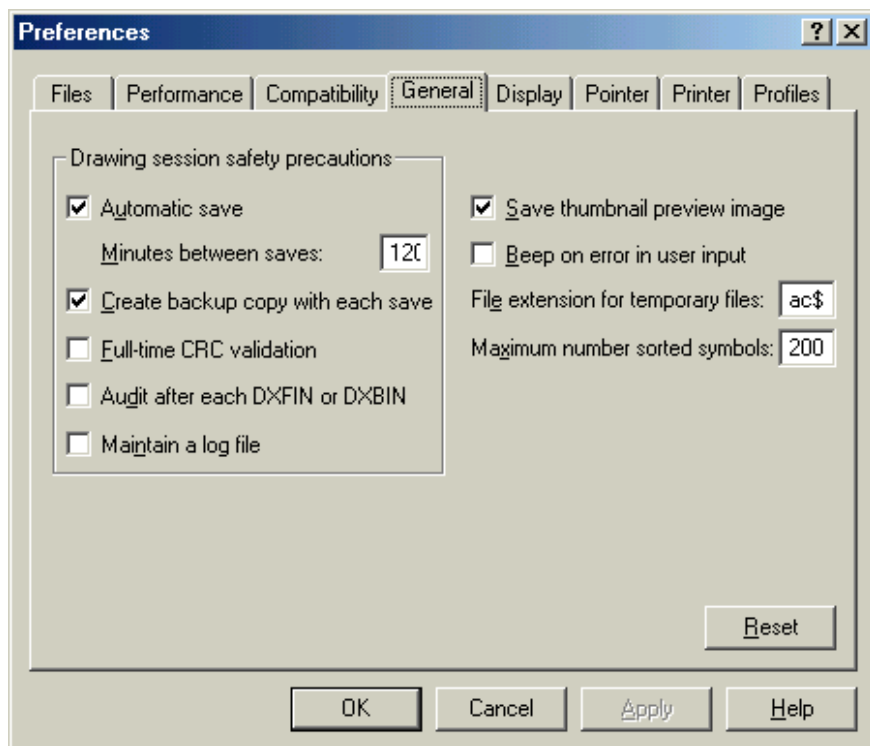
Automatic Save

Tools

General

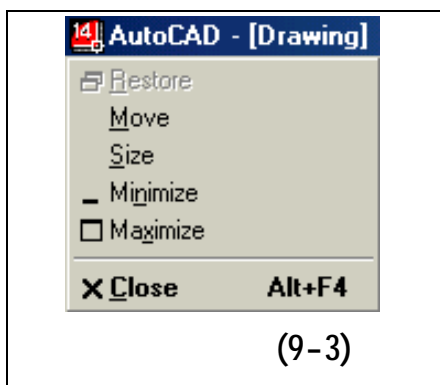
√

Minutes Between Saves



Preferences

(8-3)



(9-3)

Alt+F4

(10-3)

إغلاق أوتوكاد

Exit

Close

.File

.(9-3)

Control Menu

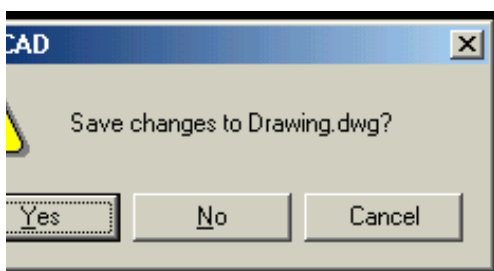
X

No

.Cancel

No

Yes



(10-3)

طباعة الرسوم:

File print

Print Plot

: (11-3) Print/Plot Configuration

Device and default information نوع الجهاز المستخدم للطباعة

.Device and default selection

Additional parameter خيارات إضافية

:

Extent

:Window

Limits

:Limits

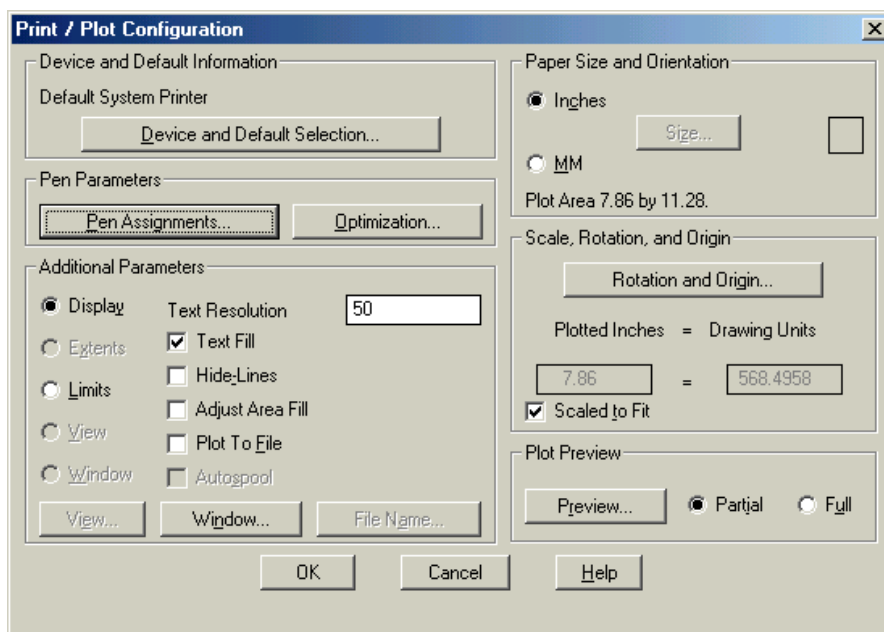
Drawing screen

:Display

A4 A3

Scale, Rotation, and design تحجيم وتدوير الرسم قبل الطباعة

Origin



Print/Plot Configuration

(11-3)

حجم ورق الطباعة واتجاهه Paper Size and Orientation

Print/Plot Configuration

OK

تمرين 3-1:

Sample

r300-20

:

r300-20